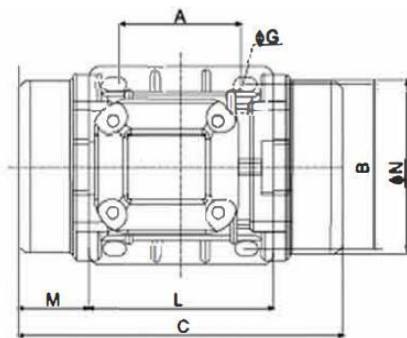
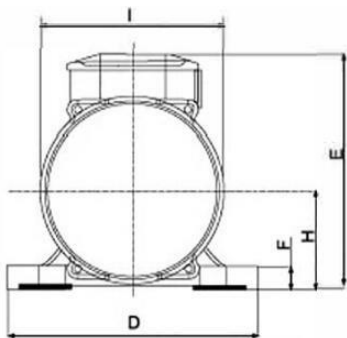




500/3 T

**Three phase-2poles-3000RPM-50HZ
230/400 Voltage**

Mechanical Features			Electric Features		
General			General		
Working moment	10.27	kg.cm	Nominal voltage	Δ:230V	Y:400V
Unbalance	5.14	kg.cm	Input power	0.5KW	
Force	536	kg	Current A max	Δ:1.67A	Y:0.96A
Bearing			Power factor	0.84	
TYPE(C&U)	6306		La/in	4	
	100%	1986	Certification		
Life(h)	80%	3869	ETL CLASS II DIV.II	T4	
	50%	16532	GROUP F G TENV NEMA 4		
Bearing Grease			ATEX II 3D Ex tD A22 T135°		
Lube Schedule			IP66		
Lube replacement			Amb Temp. (-20°~+40°)		
Grease Type					



A	105
B	140
C	334
M	78
G	13
Holes	4
D	168
E	196
F	22
H	92
I	169
L	178
N	158

Clamping torque(Nm) 80

weight	Screw	washer	Cable type	Cable Glande
16.7	M12	13X24	4GX2.5	M20X1.5

