

5/8" x 3/8"
15,875 x 9,65 mm

Pas lant: 15,875 mm

Latime interioara lant: 9,650 mm

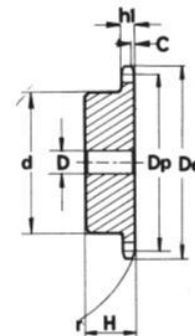
Diametru rola lant: 10,16 mm

Raza dinte "r": 16,0 mm

Latime raza "C": 1,6 mm

Latime dinte "h1": 9,1 mm

Material: otel C45E-UNI EN 10083-1



Z (numar de dinti)	Cod	De (mm)	Dp (mm)	d (mm)	D (mm)	H (mm)
8	PS 10008	47,0	41,48	25	10	25
9	PS 10009	52,6	46,42	30	10	25
10	PS 10010	57,5	51,37	35	10	25
11	PS 10011	63,0	56,34	37	12	30
12	PS 10012	68,0	61,34	42	12	30
13	PS 10013	73,0	66,32	47	12	30
14	PS 10014	78,0	71,34	52	12	30
15	PS 10015	83,0	76,36	57	12	30
16	PS 10016	88,0	81,37	60	12	30
17	PS 10017	93,0	86,39	60	12	30
18	PS 10018	98,3	91,42	70	14	30
19	PS 10019	103,3	96,45	70	14	30
20	PS 10020	108,4	101,49	75	14	30
21	PS 10021	113,4	106,52	75	16	30
22	PS 10022	118,0	111,55	80	16	30
23	PS 10023	123,4	116,58	80	16	30
24	PS 10024	128,3	121,62	80	16	30
25	PS 10025	134,0	126,66	80	16	30
26	PS 10026	139,0	131,70	85	20	35
27	PS 10027	144,0	136,75	85	20	35
28	PS 10028	148,7	141,78	90	20	35
29	PS 10029	153,8	146,83	90	20	35
30	PS 10030	158,8	151,87	90	20	35
31	PS 10031	163,9	156,92	95	20	35
32	PS 10032	168,9	161,95	95	20	35
33	PS 10033	174,5	167,00	95	20	35
34	PS 10034	179,0	172,05	95	20	35
35	PS 10035	184,1	177,10	95	20	35
36	PS 10036	189,1	182,15	100	20	35
37	PS 10037	194,2	187,20	100	20	35
38	PS 10038	199,2	192,24	100	20	35
39	PS 10039	204,2	197,29	100	20	35
40	PS 10040	209,3	202,34	100	20	35
42	PS 10042	219,9	212,44	108*	20	43
45	PS 10045	235,0	227,58	108*	20	43
46	PS 10046	240,1	232,63	108*	20	43
48	PS 10048	250,2	242,73	108*	20	43
50	PS 10050	260,3	252,82	108*	20	43
55	PS 10055	285,5	278,08	108*	20	43
57	PS 10057	296,0	288,18	108*	25	43
60	PS 10060	310,8	303,32	108*	25	43
76	PS 10076	392,1	384,16	108*	25	43
95	PS 10095	488,5	480,14	118*	30	59